

**Peterson's**

**L7  
Bar**

**Limousin**

*33rd Annual*

**Limousin Production Sale**

**1:00 p.m., Tuesday,**

**April 12, 2011**

**at the ranch, Pukwana, SD**



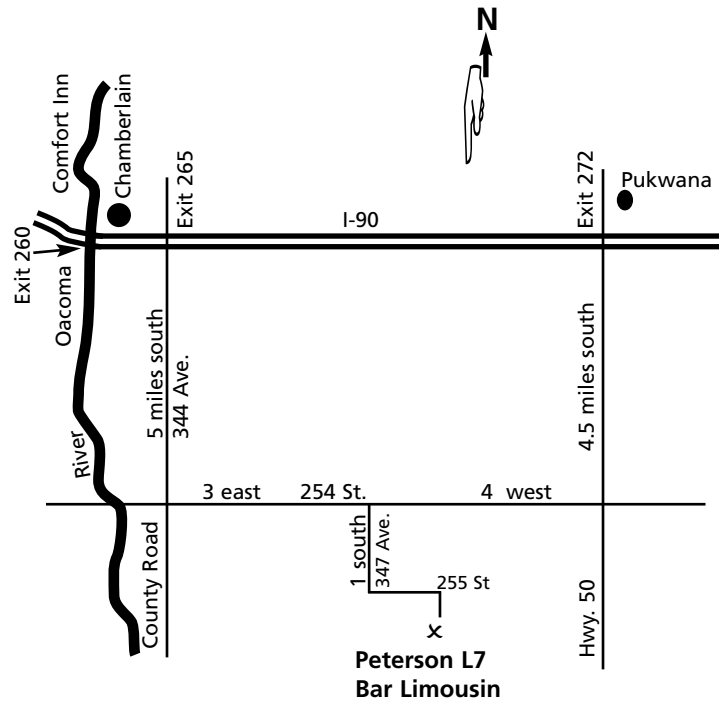
# Why is Bull Selection So Important?

A bull sires 30 to 40 calves each year, while most cows produce 10 calves in a lifetime. Bull selection is the foundation for building a profitable beef cow herd. It has been estimated that over 80% of herd improvement is directly attributed to bull selection. This is one of the most important decisions and investments that a cowman makes.

## 10 Good Reasons to Buy Performance Tested Cattle

Weaning Weight.....	is 30%	Heritable
Feedlot Gain.....	is 45%	Heritable
Pasture Gain.....	is 30%	Heritable
Efficiency of Gain .....	is 40%	Heritable
Final Feedlot Weight.....	is 60%	Heritable
Carcass grade .....	is 40%	Heritable
Ribeye Area.....	is 50%	Heritable
Tenderness .....	is 60%	Heritable
Fat Thickness.....	is 45%	Heritable
Retail Products, Pounds.....	is 60%	Heritable

## Directions to the ranch...



# Limousin...your value based marketing edge

## Commercial Marketing Program

- Free feeder calf listing faxed to buyers looking for in excess of 100,000 Limousin cross calves.
- Free feeder calf listing on Data Transmission Network (DTN) customers represent some 21 million head of cattle.
- A variety of retained ownership and partnership feeding options.
- Sire Evaluation for Carcass Traits.
- Up-to-date information about current industry value-based formulas.
- Customer retention tools.
- General information about markets, marketing, genetics, nutrition, etc.

For more information call NALF, at 303/220-1693.

## How to analyze our performance information . . .

### BW - weight of calf at birth

All the births were scored to calving ease with:

- A - Unassisted
- B - Some Help
- C - Mechanical Pull
- D - Caesarean
- E - Abnormal Presentation

**WW - weaning weight** - This is the weaning weight of the cattle adjusted to 205 days of age. WW is a good indication of early growth of a calf and milking ability of the mother.

**YW - yearling weight** - This is the yearling weight of the animal adjusted to 365 days of age with at least 150 days between the actual weaning weight and the time of recording the actual yearling weight.

**WDA - weight per day of age** - This is a tool for you to use in your selection because rate of growth is heritable. However, WDA could have a direct relation to how hard the animals are fed, but it also gives you an idea about growth potential especially when compared to weaning and yearling weight.

**SC - scrotal measurement** - Measured in centimeters. By Doc Walters, not adjusted.

**Scan data on yearling bulls is adjusted to 365 days.**

# Peterson's L7 Bar Limousin

Welcome,

We are truly living in exciting times in agriculture. Both feeder and fed cattle are setting new contract highs as are corn and soybeans. So, once again the feed efficiency that the Limousin cattle are famous for is becoming an important factor.

With cattle numbers the lowest since in the 1950's it looks like we should be in a profitable mode for several years. This is also a very good time to consider selling that old bull and purchasing a younger bull to replace him, as the salvage value is at an all time high.

We are offering a select group of fall bulls for those people wanting bulls with a little more age. We also have Purebred and Lim-Flex cattle in the offering to meet your needs. If you have questions about the different percentages or the AI sires, feel free to contact Rod or Cade. They would be happy to visit with you about your breeding program.

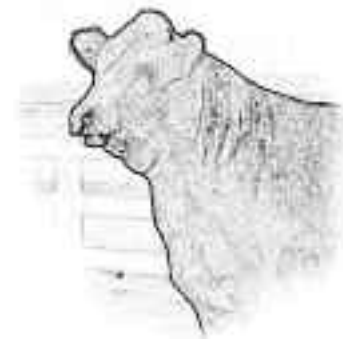
Our main goal is to keep you happy. If you have a problem please tell us so we can make it right with you. Buy with confidence, the cattle are fully guaranteed.

We make delivery swings to central locations in South Dakota and surrounding states. We will work with you in every way to get your cattle delivered to you. If you plan to use a bull AI, please indicate on the invoice so we can DNA-type the dam to meet NALF regulations.

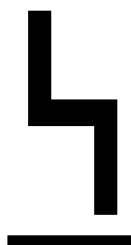
Hope to see you April 12th. Be our guest for a complimentary lunch starting at 11:30.

For more information contact us anytime. Thanks for your interest in our program.

The Peterson Families



**One Family**



**Committed Program**

**...Built From the Ground Up**



**1:00 p.m., Tuesday, April 12, 2011  
at the ranch, Pukwana, SD**

**Sale Day Phone: 605/894-4470**

**Selling 55 Lots**

**48 Yearling Bulls**

**and 5 18-Month-Old - 93% Polled & 67% Black**

**2 Fall Heifers**

**Location:** At the ranch located 5 south, 3 east, 1 south, 1/4 east off I-90, exit 265.

**Sale Day Phone:** 605/894-4470, 605/730-4470, 605/730-0705 or 605/730-4214

**Sale Headquarters:** Howard Johnson Inn & Suites, Oacoma, SD.....605/234-4222

**Cattle Location:** The cattle will be at the ranch south of Chamberlain. You are welcome to come and inspect the cattle anytime.

**Special Guests:**

- Kiley McKinna, Limousin World .....402/350-3447
- Merlyn Siegfried, Cattle Business Weekly.....605/868-9266
- Jeff Russo, Laura's Lean Beef.....605/428-4182
- Dean Summerbell, Heartland Limousin Ass'n. ....612/963-3799

**Airports:** Chamberlain has a 3,700 foot hard surfaced runway. Commercial flights are available at Pierre and Sioux Falls. Call us if we can be of assistance.

**Auctioneer:** C.K. Sonny Booth.....918/542-1587

**Sale Consultant:**

Mark Smith, Grassroots Genetics & Consulting .....515-965-1458 or Cell- 515/229-5227

**Free lunch on sale day!**

**Please bring this catalog with you to the sale.**

**Scrotal Measurements Available Sale Day.**

**Peterson's L7 Bar Limousin**

**Rod and Wendy Peterson & Family**

**34715 255th St.**

**Pukwana, SD 57370**

**email: cepeterson@midstatesd.net**

**Rod - 605/730-4470, Cade - 605/730-0705, Chisum - 605/730-4214, or**

**Quin - 918/625-2500**

**Website: petersonsL7bar.com**



# ~ Purebred Reference Sires ~



## Wulfs Titus 2149T

WULFS REALTOR 1503R

WULFS MEADOW GRASS 2149M

HUNT MR JOCK 44J  
WULFS LENA 1503L  
WULFS GOLIATH 2453G  
MISS WULFETTE 9062J

EPDs	CED	BW	WW	YW	MA	SC	DOC	CW	REA	YG	Marb
3	3.9	71	123	17	1.0	22	68	1.06	-0.15	-0.13	

Here's a bull with a fresh pedigree. He is siring calves that are long, deep, heavy muscled, and easy to be around.



## L7 Red Pepper 3001N

WULFS GUARDIAN 5074G

L7 CHILI PEPPER 080K

WULFS RAMBLER 8400X  
WULFS EXAMPLE 5074E  
CABIN CREEK BLACKMAIL 69F  
MAX L7 600F

EPDs	CED	BW	WW	YW	MA	SC	DOC	CW	REA	YG	Marb
7	1.5	55	97	9	0.1	21	42	0.76	-0.13	-0.13	

The senior herdsire here at L7 Bar. Pepper sires calves with the thickness and performance that is expected with his pedigree. He's also leaving some real nice females.



## Wulfs Space Ship 3223S

WULFS NAPOLEON 1018N

WULFS NANNY 3223N

WULFS KEYSTONE 7522K  
WULFS LOTION 1018L  
WULFS LINCOLN 6638L  
WULFS KAREN 0007K

EPDs	CED	BW	WW	YW	MA	SC	DOC	CW	REA	YG	Marb
9	2.2	40	79	15	2.1	15	38	0.78	-0.03	-0.06	

Space Ship is moderating frame and siring calves that are thick and deep. He also offers a different pedigree here at L7 Bar.



## Wulfs Guardian 5074G

WULFS RAMBLER 8400X

WULFS EXAMPLE 5074E

POLLED PACK LEADER 1182U  
T TRI PURECHO 100K  
WULF'S CHOPPER 1014C  
MISS WOLFETTE 2151B

EPDs	CED	BW	WW	YW	MA	SC	DOC	CW	REA	YG	Marb
12	-1.9	33	74	17	-0.2	33	11	0.87	-0.21	-0.33	

Guardian is a proven calving ease sire. His calves are known for muscling and growth. They also have good carcass and maternal traits. He has left some nice daughters.



## HC Final Time 407

HC OVERTIME 972

HC POLLED CANDY 763

HC OVERTIME 756  
HC DYNASTY 215  
YKCC ATLANTIC 397N  
HC BLACK CANDY 466

EPDs	CED	BW	WW	YW	MA	SC	DOC	CW	REA	YG	Marb
1	5.0	49	94	13	1.5	26	20	0.72	-0.10	0.00	

Final Time offers a fairly new pedigree, and is siring calves that have the length and thickness that cattlemen appreciate.



## L7 Cabana 6072S

ROMN JUSTICE

L7 CHILI PEPPER 080K

ROMN FORTUNE  
ROMN LADY ROCK 57G  
CABIN CREEK BLACKMAIL 69F  
MAX L7 600F

EPDs	CED	BW	WW	YW	MA	SC	DOC	CW	REA	YG	Marb
8	2.6	50	92	12	0.5	22	42	0.61	-0.06	-0.02	

Another herdsire out of Chili Pepper. Cabana moderated calves, while adding middle and muscle.



## L7 Santiago 6009S

LVLS SECRET WEAPON 4408K

MISS L7 700G

LVLS FARMER 4G  
LVLS 408H  
COLE FIRST DOWN 46D  
MISS L7 041Y

EPDs	CED	BW	WW	YW	MA	SC	DOC	CW	REA	YG	Marb
5	3.3	59	105	37	0.7	19	33	0.30	0.10	0.04	

Santiago was the lead bull in our Denver pen in 2007. His calves have tremendous length, thickness and performance.



## Wulfs Ransom 3059R

WULFS NASA 1212N

WULFS NOBILITY 3059N

WULFS FANFARE 4055F  
MISS WULFETTE 1212L  
COLE WULF HUNT  
WULFS KLARICE 0095K

EPDs	CED	BW	WW	YW	MA	SC	DOC	CW	REA	YG	Marb
21	-4.9	36	75	22	0.1	39	31	0.65	-0.04	-0.02	

A popular AI sire used for his calving ease.

**Check our website for additional information and pictures:  
[www.petersonsL7bar.com](http://www.petersonsL7bar.com)**

# Spring 2011 EPD Statistics and Trends

## 2008-2010 Born Calves

Upper Percentile Level	Calving Ease Direct	Birth Weight	Weaning Weight	Yearling Weight	Milking Ability	Calving Ease Maternal	Scrotal Circum.	Stayability	Docility	Carcass Weight	Ribeye Area	Yield Grade	Marbling Score	\$MTI
1	20	-2.9	63	112	33	12	1.2	25	34	52	0.92	-0.25	0.13	51.0
2	18	-2.3	61	108	31	11	1.1	24	33	48	0.87	-0.24	0.11	50.0
3	17	-1.9	59	106	30	11	1.0	24	32	45	0.84	-0.22	0.09	49.0
4	16	-1.6	58	104	30	10	1.0	23	31	43	0.81	-0.21	0.08	49.0
5	16	-1.4	57	102	29	10	0.9	23	30	42	0.79	-0.21	0.07	49.0
10	13	-0.5	54	97	27	8	0.8	22	27	37	0.73	-0.19	0.05	47.0
20	11	0.5	50	91	25	7	0.7	21	23	31	0.65	-0.16	0.01	45.0
30	9	1.1	47	87	23	6	0.6	20	21	27	0.59	-0.13	-0.01	44.0
40	8	1.5	45	83	22	5	0.5	19	18	23	0.54	-0.11	-0.03	43.0
50	7	1.9	43	80	21	4	0.4	19	16	20	0.49	-0.09	-0.05	42.0
60	6	2.3	41	76	20	3	0.3	18	15	16	0.44	-0.07	-0.06	41.0
70	5	2.7	39	73	19	2	0.2	17	12	12	0.39	-0.04	-0.08	41.0
80	4	3.2	36	69	17	2	0.1	15	10	8	0.32	-0.01	-0.10	39.0
90	3	3.8	33	64	15	0	0.0	14	6	2	0.24	0.03	-0.12	38.0
<b>Count</b>	41,446	41,823	41,823	41,823	42,226	41,446	37,864	3,060	24,527	28,571	28,571	28,571	28,571	28,540
<b>Average</b>	7.7	1.8	42.9	80.2	20.9	4.1	0.4	18.1	16.4	19.7	0.49	-0.08	-0.04	42.5
<b>Std Dev</b>	3.0	1.7	8.4	13.3	5.0	2.2	0.3	2.7	6.7	16.5	0.29	0.18	0.19	6.8
<b>Min</b>	-9.2	-7.0	2.2	25.2	-5.6	-11.4	-1.1	5.4	-25.6	-54.5	-0.29	-0.38	-0.27	26.0
<b>Max</b>	26.2	9.7	90.4	138.4	47.5	17.3	2.0	29.1	40.5	77.2	1.30	0.36	0.30	58.0



## L7 Red Pepper

Sire of Lots 4, 9, 12, 13, 19, 20, 24, 25, 30 & 49

# Spring 2011 EPD Statistics and Trends

## 2008-2010 Born Lim-FlexCalves

Upper Percentile Level	Calving Ease Direct	Birth Weight	Weaning Weight	Yearling Weight	Milking Ability	Calving Ease Maternal	Scrotal Circum.	Stayability	Docility	Carcass Weight	Ribeye Area	Yield Grade	Marbling Score	\$MTI
1	16	-4.1	66	120	37	9	1.0	22	28	63	0.55	-0.11	0.82	70.0
2	15	-3.6	63	116	36	8	0.9	22	27	59	0.48	-0.05	0.76	68.0
3	14	-3.2	62	114	35	7	0.9	22	26	56	0.43	-0.01	0.72	67.0
4	14	-2.9	61	112	34	7	0.8	22	25	54	0.39	0.03	0.69	66.0
5	13	-2.7	60	111	33	7	0.8	21	24	52	0.37	0.06	0.67	65.0
10	12	-2.0	56	106	32	6	0.7	20	21	46	0.26	0.12	0.60	63.0
20	10	-1.2	53	100	30	4	0.6	18	18	39	0.14	0.19	0.53	60.0
30	10	-0.6	50	96	28	4	0.5	17	15	35	0.04	0.24	0.47	58.0
40	9	-0.2	48	92	27	3	0.4	16	14	31	-0.05	0.30	0.41	56.0
50	8	0.3	45	89	25	3	0.3	15	12	27	-0.13	0.35	0.36	54.0
60	7	0.7	43	85	24	2	0.3	15	10	23	-0.21	0.40	0.30	52.0
70	7	1.1	41	82	23	2	0.2	14	8	19	-0.29	0.44	0.25	51.0
80	6	1.6	39	78	21	1	0.1	13	7	14	-0.38	0.49	0.19	48.0
90	4	2.2	35	72	19	0	0.0	13	4	7	-0.50	0.56	0.12	46.0
Count	11,671	12,461	12,461	12,461	12,532	11,671	8,592	224	6,321	9,836	9,836	9,836	9,836	9,808
Average	8.1	0.2	45.6	88.8	25.3	2.7	0.3	15.7	12.1	26.3	-0.12	0.34	0.36	54.2
Std Dev	3.0	1.7	8.4	13.3	5.0	2.2	0.3	2.7	6.7	16.5	0.29	0.18	0.19	6.8
Min	-5.4	-7.6	11.6	35.7	3.3	-6.7	-0.7	9.9	-16.9	-43.4	-1.23	-0.24	-0.16	34.0
Max	25.6	7.0	77.7	140.7	44.8	12.4	1.5	24.1	36.5	91.2	0.81	1.02	1.01	78.0

*“Limousin dams tended to have the highest calving and weaning rates because they were able to have heavier calves with less calving difficulty and higher survival rates.”*

*Comerford et al., J. Anim. Sci. 64:65-76*

*“The amount of feed required per unit of retail beef produced is the ultimate biological measure of beef production efficiency. Limousin calves produced the same amount of trimmed retail product with roughly one-half as much feed weaning to harvest as compared to Angus and Hereford calves.”*

*Gregory et al., J. Anim. Sci. 72:1154*

*“Limousin bulls can transform an average to below average set of cows into a set of calves that will top the market. No other breed puts the muscle shape and expression on a set of calves like Limousin.”*

*John Campbell, Winter Livestock, La Junta, Colorado*

*“Muscularity is one thing our producers could really work on to improve the value of their calves. As weight increases, buyers pay less of a difference for breed type. But muscling impacts the price, no matter what the weight.”*

*Tom Troxell, Livestock Extension Specialist, University of Arkansas, as told to BEEF magazine*

# ~ 18-Month-old Bulls ~

Trying to meet the needs of some customers, we have started a small group of fall calving cows. This group of cows is low in numbers, but high on quality. Look these September born bulls over closely.



**Whiskey on the Rocks 9063W**

Whiskey on the Rocks was a popular lot at the Black Hills Stock Show this year. He was praised for his length of body, depth of rib, and thickness, while still being stylish. Lots 1, 2, 3 are all flushmates to "Whiskey". Don't miss the boat on some great genetics with these full brothers.

Lot 3

## L7 WELL DONE 9064W

PUREBRED, BULL DOUBLE BLACK/DOUBLE POLLED  
9/6/2009 LSBL 9064W

HC OVERTIME 972 Act.  
HC FINAL TIME 407 UREA: 17.70  
HC POLLED CANDY 763 UFAT: 0.19  
CABIN CREEK BLACKMAIL 69F UIMF: 1.97  
L7 CHILI PEPPER 080K  
MAX L7 600F

BW:	88 A	ADJ WW:	687	Adj YW:	1216						
EPDs	CED	BW	WW	YW	MA	SC	DOC	CW	REA	YG	Marb
	1	5.1	52	95	12	.8	17	30	.58	-.05	0.00

Another double black and double polled Final Time. Scanned a 17.7 REA, and look at the performance data. Lots of rib and muscle.

Lot 1

## L7 WAGE CLAIM 9061W

PUREBRED RED/DOUBLE POLLED  
9/2/2009 LSBL 9061W

HC OVERTIME 972 Act.  
HC FINAL TIME 407 UREA: 18.50  
HC POLLED CANDY 763 UFAT: 0.17  
CABIN CREEK BLACKMAIL 69F UIMF: 2.37  
L7 CHILI PEPPER 080K  
MAX L7 600F

BW:	85 A	ADJ WW:	750	Adj YW:	1244						
EPDs	CED	BW	WW	YW	MA	SC	DOC	CW	REA	YG	Marb
	1	4.3	50	92	12	.8	17	30	.58	-.05	0.00

Big, thick, deep and rugged. All words to describe this great son of Chili Pepper. Scanned an 18.5 REA with lots of performance.

Lot 2

## L7 WORKING PAPPERS 9062W

PUREBRED, BULL DOUBLE BLACK/DOUBLE POLLED  
9/5/2009 LSBL 9062W

HC OVERTIME 972 Act.  
HC FINAL TIME 407 UREA: 18.40  
HC POLLED CANDY 763 UFAT: 0.20  
CABIN CREEK BLACKMAIL 69F UIMF: 1.75  
L7 CHILI PEPPER 080K  
MAX L7 600F

BW:	88 A	ADJ WW:	672	Adj YW:	1197						
EPDs	CED	BW	WW	YW	MA	SC	DOC	CW	REA	YG	Marb
	1	5.1	52	95	12	.8	17	30	.58	-.05	0.00

Working Pappers is double black and double polled. He is long and thick with excellent performance. Scanned a 18.4 REA.

Lot 4

## L7 9066W

PUREBRED, BULL RED/HORNED  
9/26/2009 LSBL 9066W

WULF'S GUARDIAN 5074G Act.  
L7 RED PEPPER 3001N UREA: 17.70  
L7 CHILI PEPPER 080K UFAT: 0.22  
CABIN CREEK BLACKMAIL UIMF: 2.45  
L7 JANIE BLACK 319N  
MISS L7 823H

BW:	90 A	ADJ WW:	711	Adj YW:	1203						
EPDs	CED	BW	WW	YW	MA	SC	DOC	CW	REA	YG	Marb
	4	2.6	50	89	14	.2	NA	31	.59	-.09	-.08

A big, thick Red Pepper son with 711 WW. Loads of muscle in this dude.

Lot 5

## L7 9067W

LIMFLEX 50%, BULL DOUBLE BLACK/DOUBLE POLLED  
9/5/2009 LSBL 9067W

S A F FOCUS OF E R Act.  
MYTTY IN FOCUS UREA: 19.00  
MYTTY COUNTESS 906 UFAT: 0.29  
WULFS GUARDIAN 5074G UIMF: 4.01  
MISS L7 727T  
MISS L7 526R

BW:	75 A	ADJ WW:	607	Adj YW:	1190						
EPDs	CED	BW	WW	YW	MA	SC	DOC	CW	REA	YG	Marb
	13	-2.4	49	98	27	.3	26	24	-.23	.44	.42

Be sure to find this double polled, double black son of In Focus. He was 75 pounds at birth and just kept growing. His scan data was excellent with a 19 REA and 4.01 IMF.

# ~ Yearling Bulls ~

The purebred bulls in this section are the results of over 40 years of AI and performance testing. We develop these bulls so you can see the performance qualities and still have the longevity that you expect.

Lot  
**6**

## L7 0001X

PUREBRED, BULL BLACK/POLLED  
3/30/2010 L7 0001 X NPM1960702

ROMN JUSTICE  
L7 CABANA 6072S UREA: 14.94  
L7 CHILI PEPPER 080K UFAT: 0.18  
GOLDENVIEW REVAMP BTY 17R  
MISS L7 802H UIMF: 1.91  
MISS L7 921X

BW: 87 A	ADJ WW: 673	Adj YW: 1119
EPDs CED BW WW YW MA SC DOC CW REA YG Marb	7 2.5 39 71 20 0.2	

A solid Cabana son with a 673 WW. Goes back to good Revamp cow.



L7 Cabana — Sire of Lot 6, 8, 10

Lot  
**7**

## L7 0003X

PUREBRED, BULL BLACK/DOUBLE POLLED  
3/15/2010 LSBL 0003X NPM1960706

WULFS REALTOR 1503R  
WULFS TITUS 2149T UREA: 16.04  
WULFS MEADOW GRASS 2149M UFAT: 0.21  
TRAI DESERT STORM  
MISS L7 900J UIMF: 2.27  
MISS L7 008Y

BW: 97 A	ADJ WW: 710	Adj YW: 1226
EPDs CED BW WW YW MA SC DOC CW REA YG Marb	2 5.0 59 98 20 0.6 14 47 0.77 -0.17 -0.12	

This double polled son of Titus is thick and deep. Just look at his performance numbers. His dam is a consistent producer.

Lot  
**9**

## L7 0005X

PUREBRED, BULL RED/DOUBLE POLLED  
4/18/2010 LSBL 0005X NPM1960708

WULFS GUARDIAN 5074G  
L7 RED PEPPER 3001N UREA: 14.22  
L7 CHILI PEPPER 080K UFAT: 0.24  
COLE FIRST DOWN 46D  
MISS L7 943J UIMF: 2.23  
CASSIE 719V

BW: 85 A	ADJ WW: 674	Adj YW: 1218
EPDs CED BW WW YW MA SC DOC CW REA YG Marb	11 0.7 47 88 14 0.4 27 0.38 -0.02 -0.03	

A double polled Red Pepper son with Cassie on the bottom side. Weaned of at 674 pounds.

Lot  
**8**

## L7 0004X

PUREBRED, BULL RED/POLLED  
4/3/2010 LSBL 0004X NPM1960707

ROMN JUSTICE  
L7 CABANA 6072S UREA: 14.92  
L7 CHILI PEPPER 080K UFAT: 0.12  
SLVLDVFC PLANET HOLLYWOOD  
MISS L7 930J UIMF: 2.39  
MISS L7 832W

BW: 90 A	ADJ WW: 640	Adj YW: 1122
EPDs CED BW WW YW MA SC DOC CW REA YG Marb	7 2.8 43 83 12 0.3	

Another good Cabana out of a cow that has produced plenty of sale highlights. He is red polled.

Lot  
**10**

## L7 0006X

PUREBRED, BULL DOUBLE BLACK/DOUBLEPOLLED  
4/6/2010 LSBL 0006X NPM1960709

ROMN JUSTICE  
L7 CABANA 6072S UREA: 14.98  
L7 CHILI PEPPER 080K UFAT: 0.20  
FSHK JACKSON 538  
MISS L7 960J UIMF: 2.11  
MISS L7 330C

BW: 93 A	ADJ WW: 626	Adj YW: 1150
EPDs CED BW WW YW MA SC DOC CW REA YG Marb	6 2.7 42 78 14 0.3	

A double polled, double black Cabana going back to one of Rod's favorite cow families.

**Lot 11****L7 XEROX 0008X**

PUREBRED, BULL RED/DOUBLE POLLED  
 3/15/2010 LSBL 0008X NPM1977058

WULFS NAPLOEON 1018N Act.  
 WULFS SPACESHIP 32235 UREA: 17.74  
 WULFS NANNY 3223N UFAT: 0.23  
 CABIN CREEK BLACKMAIL 69F UIMF: 2.93  
 L7 CHILI PEPPER 080K  
 MAX L7 600F

BW: 92 A	ADJ WW: 736	Adj YW: 1320									
EPDs	CED	BW	WW	YW	MA	SC	DOC	CW	REA	YG	Marb
5	3.5	47	87	12	1.1	12	39	.61	-.02	-.03	

Sure to be a sale favorite. Xerox is a son of Chili Pepper. He is super long and has tons of muscle. Just look at his individual performance. He also scanned a 17.74 REA. Don't miss out on your chance to buy an excellent genetic package. Selling 2/3 interest and full possession.

**Lot 12****L7 0009X**

PUREBRED, BULL RED/DOUBLE POLLED  
 4/18/2010 LSBL 0009X NPM1960711

WULFS GUARDIAN 5074G  
 L7 RED PEPPER 3001N UREA: 16.62  
 L7 CHILI PEPPER 080K UFAT: 0.19  
 TRAI DESERT STORM UIMF: 2.67  
 MISS L7 108L  
 MISS L7 801H

BW: 92 A	ADJ WW: 650	Adj YW: 1143									
EPDs	CED	BW	WW	YW	MA	SC	DOC	CW	REA	YG	Marb
3	3.9	49	85	19	0.0		26	0.60	-.14	-.12	

This Red Pepper son is a full brother to one of last year's sale highlights. Plenty of performance and scanned a 16.62 REA. He is also double polled.

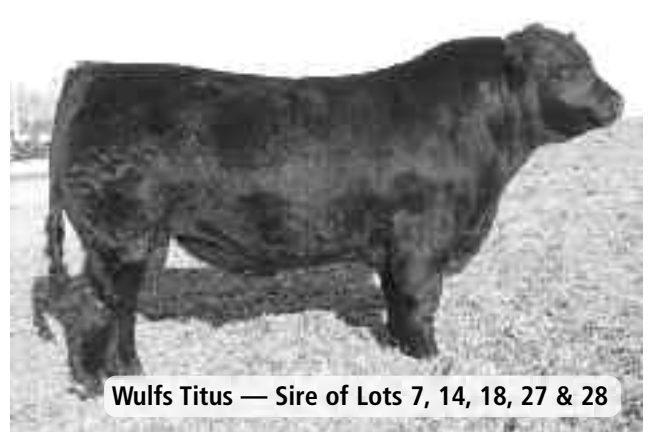
**Lot 13****L7 0010X**

PUREBRED, BULL RED/HORNED  
 4/19/2010 LSBL 0010X NPM1960712

WULFS GUARDIAN 5074G  
 L7 RED PEPPER 3001N UREA: 13.94  
 L7 CHILI PEPPER 080K UFAT: 0.24  
 FSHK JACKSON 538 UIMF: 2.71  
 CPCC 113L  
 NAOMI 439D

BW: 93 A	ADJ WW: 685	Adj YW: 1253									
EPDs	CED	BW	WW	YW	MA	SC	DOC	CW	REA	YG	Marb
6	2.2	48	86	15	0.2		12	0.26	-.06	-.09	

A solid son of Red Pepper with lots of growth and performance. Goes back to Cassie.

**Lot 14****L7 0011X**

PUREBRED, BULL DOUBLE BLACK/DOUBLE POLLED  
 3/15/2010 LSBL 0011X NPM1960713

WULFS REALTOR 1503R  
 WULFS TITUS 2149T UREA: 15.74  
 WULFS MEADOW GRASS 2149M UFAT: 0.34  
 FSHK JACKSON 538 UIMF: 2.32  
 MISS L7 117L  
 MISS L7 812H

BW: 92 A	ADJ WW: 703	Adj YW: 1255									
EPDs	CED	BW	WW	YW	MA	SC	DOC	CW	REA	YG	Marb
5	3.0	55	99	23	0.8	19	33	0.65	-.08	-.15	

X Ray is a double black, double polled son of Titus. This bull is long, thick, and deep. He has high WW and YW EPD's, as well as excellent individual performance. His Jackson mother is a solid producer that has never missed. She has produced several featured lots throughout her years. Selling 2/3 interest and full possession.



Lot 15

### L7 0014X

PUREBRED, BULL      BLACK/POLLED  
3/3/2010      LSBL 0014X      NPM1960716

HC OVERTIME 972  
HC FINAL TIME 407      UREA: 14.00  
HC POLLED CANDY 763      UFAT: 0.27  
RPLF GALVESTON 416G      UIMF: 2.39  
MISS L7 137L  
MISS L7 521E

BW: 91 A	ADJ WW: 759	Adj YW: 1254									
EPDs	CED	BW	WW	YW	MA	SC	DOC	CW	REA	YG	Marb
6	3.6	44	85	19	1.0			18	0.55	-.08	-.04

Here's a big, thick, high performing son of Final Time.



Lot 16

### L7 X OUT 0015X

PUREBRED, BULL      BLACK/POLLED  
3/11/2010      LSBL 0015X      NPM1960717

WULFS NAPOLEON 1018N  
WULFS SPACE SHIP 3223S      UREA: 17.16  
WULFS NANNY 3223N      UFAT: 0.36  
RPLF GALVESTON 416G      UIMF: 3.02  
MISS L7 139L  
MISS L7 620F

BW: 82 A	ADJ WW: 687	Adj YW: 1237									
EPDs	CED	BW	WW	YW	MA	SC	DOC	CW	REA	YG	Marb
10	2.1	37	73	14	1.2	9	19	0.63	-.10	-.11	

X Out is a moderate son of Wulfs Spaceship. He is deep ribbed and real thick. Notice his individual performance and his 17.16 REA and 3.02 IMF.



Lot 17

### L7 0019X

PUREBRED, BULL      RED/DOUBLE POLLED  
3/22/2010      LSBL 0019X      NPM1960726

LVLS SECRET WEAPON 4408K  
L7 SANTIAGO 6009S      UREA: 15.48  
MISS L7 700G      UFAT: 0.17  
CABIN CREEK BLACKMAIL 69F      UIMF: 2.49  
MISS L7 229M  
MISS L7 527E

BW: 92 A	ADJ WW: 646	Adj YW: 1134									
EPDs	CED	BW	WW	YW	MA	SC	DOC	CW	REA	YG	Marb
4	3.4	49	89	26	0.5			25	0.40	-.01	0.00

This son of Santiago is long and thick. He had a 646 WW and 15.48 REA.



Lot 18

### L7 XMARKSTHESPOT 0021X

PUREBRED, BULL      DOUBLE BLACK/DOUBLE POLLED  
3/15/2010      LSBL 0021X      NPM1960728

WULFS REALTOR 1503R  
WULFS TITUS 2149T      UREA: 18.14  
WULFS MEADOW GRASS 2149M      UFAT: 0.21  
CABIN CREEK BLACKMAIL 69F      UIMF: 2.21  
MISS L7 322N  
MISS L7 942J

BW: 95 A	ADJ WW: 755	Adj YW: 1328									
EPDs	CED	BW	WW	YW	MA	SC	DOC	CW	REA	YG	Marb
2	4.5	62	109	14	0.7	19	49	0.71	-.06	-.07	

XMarksthespot has been a favorite since he hit the ground last spring. Here's a bull that's bred to perform. High growth EPD's as well as individual performance. He also scanned a 18.14 REA. This bull is as long as a well rope and super thick. His Blackmail mother goes back to Cassie and has been a consistent producer. She is the dam of the 2010 BHSS People's Choice Bull. Selling 2/3 interest and full possession.

Lot 19

### L7 0022X

PUREBRED, BULL      RED/DOUBLE POLLED  
4/6/2010      LSBL 0022X      NPM1960729

WULFS GUARDIAN 5074G      Act.  
L7 RED PEPPER 3001N      UREA: 15.18  
L7 CHILI PEPPER 080K      UFAT: 0.18  
L7 JOHNNY BLACK 1040L      UIMF: 1.99  
L7 NIGHTINGALE 353N  
MISS L7 703G

BW: 80 A	ADJ WW: 662	Adj YW: 1156									
EPDs	CED	BW	WW	YW	MA	SC	DOC	CW	REA	YG	Marb
7	1.6	47	83	14	0.2			29	0.67	-.13	-.12

This double polled Red Pepper son has a .67 REA EPD and scanned a 15.18 REA. Weaned off at 662 pounds. Lots of meat here.

**Lot 20****L7 0024X**PUREBRED, BULL  
3/26/2010 LSBL 0024X RED/HORNED  
NPM1960732

WULFS GUARDIAN 5074G

L7 RED PEPPER 3001N

L7 CHILI PEPPER 080K

L7 JOHNNY BLACK 1040L

MISS L7 412P

MISS L7 963J

UREA: 16.26

UFAT: 0.16

UIMF: 1.87

BW: 92 A ADJ WW: 689 Adj YW: 1182

EPDs	CED	BW	WW	YW	MA	SC	DOC	CW	REA	YG	Marb
4	2.9	51	90	12	0.2			29	0.65	-0.15	-0.11

Another meaty Red Pepper son out of a solid Johnny Black cow. Look at the performance and scan data.

**Lot 21****L7 XXX 0025X**PUREBRED, BULL  
4/4/2010 LSBL 0025X DOUBLE BLACK/DOUBLE POLLED  
NPM1964378

HC OVERTIME 972

HC FINAL TIME 407

HC POLLED CANDY 763

GPFF BLAQUE RULON

MISS L7 418P

MISS L7 003K

UREA: 15.44

UFAT: 0.27

UIMF: 3.44

BW: 80 A ADJ WW: 654 Adj YW: 1202

EPDs	CED	BW	WW	YW	MA	SC	DOC	CW	REA	YG	Marb
7	1.7	41	77	18	1.0	19	14	0.63	-0.12	-0.06	

This double black and double polled son of Final Time is out of a consistent producing Rulon cow. He is thick, deep, and moderate framed.

**Lot 24****L7 0028X**PUREBRED, BULL  
4/4/2010 LSBL 0028X RED/DOUBLE POLLED  
NPM1960736

WULFS GUARDIAN 5074G

L7 RED PEPPER 3001N

L7 CHILI PEPPER 080K

L 7'N SEVEN

MISS L7 438P

MISS L7 802H

UREA: 13.34

UFAT: 0.25

UIMF: 2.40

BW: 91 A ADJ WW: 663 Adj YW: 1209

EPDs	CED	BW	WW	YW	MA	SC	DOC	CW	REA	YG	Marb
5	2.9	50	92	16	0.1			33	0.66	-0.14	-0.09

This double polled Pepper son has high growth EPD's and a 663 WW.

**Lot 22****L7 0026X**PUREBREED, BULL  
4/3/2010 LSBL 0026X RED/HORNED  
NPM1960734

LVLS SECRET WEAPON 4408K

L7 SANTIAGO 6009S

MISS L7 700G

DEVONS THE REAL DEAL

MISS L7 422P

MISS L7 823H

UREA: 16.82

UFAT: 0.18

UIMF: 2.48

BW: 92 A ADJ WW: 703 Adj YW: 1150

EPDs	CED	BW	WW	YW	MA	SC	DOC	CW	REA	YG	Marb
8	3.0	48	84	27	0.7			21	0.36	-0.01	-0.02

This Santiago son was heavy at weaning and scanned a 16.83 REA.

**Lot 25****L7 0031X**PUREBRED, BULL  
4/19/2010 LSBL 0031X RED/DOUBLE POLLED  
NPM1960739

WULFS GUARDIAN 5074G

L7 RED PEPPER 3001N

L7 CHILI PEPPER 080K

L 7'N SEVEN

MISS L7 534R

MISS L7 908J

UREA: 16.04

UFAT: 0.22

UIMF: 2.06

BW: 86 A ADJ WW: 623 Adj YW: 1122

EPDs	CED	BW	WW	YW	MA	SC	DOC	CW	REA	YG	Marb
6	1.8	48	89	12	0.1			34	0.66	-0.16	-0.13

Another double polled Pepper with high REA EPD's, and scanned a 16.04 REA.

**Lot 23****L7 0027X**PUREBRED, BULL  
3/12/2010 LSBL 0027X DOUBLE BLACK/POLLED  
NPM1960735

HC OVERTIME 972

HC FINAL TIME 407

HC POLLED CANDY 763

WULFS GUARDIAN 5074G

MISS L7 425P

MISS L7 205M

UREA: 16.38

UFAT: 0.29

UIMF: 3.32

BW: 95 A ADJ WW: 790 Adj YW: 1289

EPDs	CED	BW	WW	YW	MA	SC	DOC	CW	REA	YG	Marb
5	2.9	45	87	20	0.7	25	17	0.64	-0.07	-0.10	

Lots of performance here! This bull is big, long, and full of meat. Check out the individual performance and scan data. His dam is an excellent Guardian female.

**Lot 26****L7 0033X**PUREBRED, BULL  
4/4/2010 LSBL 0033X DOUBLE BLACK/DOUBLE POLLED  
NPM1960741

HC OVERTIME 972

HC FINAL TIME 407

HC POLLED CANDY 763

CARROUSELS LOW RIDER

MISS L7 628S

MISS L7 425P

UREA: 15.14

UFAT: 0.20

UIMF: 1.97

BW: 94 A ADJ WW: 738 Adj YW: 1157

EPDs	CED	BW	WW	YW	MA	SC	DOC	CW	REA	YG	Marb
6	2.5	46	88	21	0.7	22	18	0.69	-0.05	-0.06	

Another growthy Final Time son that's double black and double polled. Out of a good up and coming cow family.

**Lot 27****L7 0036X**PUREBRED, BULL      DOUBLE BLACK/DOUBLE POLLED  
3/7/2010                      LSBL 0036X                      NPM1960742

WULFS REALTOR 1503R

WULFS TITUS 2149T

WULFS MEADOW GRASS 2149M

WULFS GUARDIAN 5074G

MISS L7 634S

MISS L7 400P

UREA: 14.38

UFAT: 0.30

UIMF: 2.35

BW: 94 A	ADJ WW: 620	Adj YW: 1170									
EPDs	CED	BW	WW	YW	MA	SC	DOC	CW	REA	YG	Marb
3	3.9	61	107	18	0.5	20	48	0.95	-.15	-.16	

A double black, double polled Titus son with lots of grow in his EPD profile. Has a .95 REA EPD.



**Wulfs Space Ship — Sire to Lots 11, 16, 29, & 31**

**Lot 28****L7 0037X**PUREBRED, BULL                      RED/DOUBLE POLLED  
3/5/2010                      LSBL 0037X                      NPM1960743

WULFS REALTOR 1503R

WULFS TITUS 2149T

WULFS MEADOW GRASS 2149M

WULFS GUARDIAN 5074G

MISS L7 639S

MISS L7 409P

UREA: 15.04

UFAT: 0.17

UIMF: 2.08

BW: 87 A	ADJ WW: 645	Adj YW: 1225									
EPDs	CED	BW	WW	YW	MA	SC	DOC	CW	REA	YG	Marb
7	1.3	50	92	14	.04			38	0.86	-.18	-.16

Another growthy, high performing son of Titus. He is double polled, soggy and thick. Good performance and scan data.

**Lot 31****L7 0044X**PUREBRED, BULL                      BLACK/DOUBLE POLLED  
3/29/2010                      LSBL 0044X                      NPM1960750

WULFS NAPOLEON 1018N

WULFS SPACE SHIP 3223S

WULFS NANNY 3223N

OKLF LINEBACKER 341L

MISS L7 716T

CPC 113L

UREA: 13.72

UFAT: 0.29

UIMF: 3.29

BW: 88 A	ADJ WW: 584	Adj YW: 1129									
EPDs	CED	BW	WW	YW	MA	SC	DOC	CW	REA	YG	Marb
11	1.7	45	83	17	1.1	14	28	0.60	-.06	-.07	

A moderate, double polled Spaceship son that goes back to Cassie.

**Lot 29****L7 0040X**PUREBRED, BULL                      DOUBLE BLACK/DOUBLE POLLED  
3/31/2010                      LSBL 0040X                      NPM1960746

WULFS NAPOLEON 1018N

WULFS SPACE SHIP 3223S

WULFS NANNY 3223N

ROMN JUSTICE

MISS L7 701T

MISS L7 229M

UREA: 14.46

UFAT: 0.29

UIMF: 2.33

BW: 88 A	ADJ WW: 615	Adj YW: 1199									
EPDs	CED	BW	WW	YW	MA	SC	DOC	CW	REA	YG	Marb
7	3.1	44	84	14	1.4	19	34	0.71	-.07	-.05	

This Spaceship son is double polled and double black. He is deep sided, thick, and moderate.

**Lot 32****L7 X AXIS 0049X**PUREBRED, BULL                      RED/DOUBLE POLLED  
3/3/2009                      LSBL 0049X                      NPM1960755

WULFS NASA 1212N

WULFS RANSOM 3059R

WULFS NOBILITY 3059N

ROMN JUSTICE

MISS L7 807U

MISS L7 518R

UREA: 14.60

UFAT: 0.27

UIMF: 2.30

BW: 74 A	ADJ WW: 596	Adj YW: 1197									
EPDs	CED	BW	WW	YW	MA	SC	DOC	CW	REA	YG	Marb
17	-2.0	39	78	19	0.5	31	32	0.72	-.06	-.07	

X Axis is a double polled son of Ransom and out of a good little Justice cow. He's moderate and deep sided. Has a .72 REA EPD.

**Lot 30****L7 0041X**PUREBRED, BULL                      RED/DOUBLE POLLED  
4/17/2010                      LSBL 0041X                      NPM1960747

WULFS GUARDIAN 5074G

L7 RED PEPPER 3001N

L7 CHILI PEPPER 080K

LVLS SECRET WEAPON 4408K

MISS L7 706T

MISS L7 133L

UREA: 13.70

UFAT: 0.25

UIMF: 1.78

BW: 81 A	ADJ WW: 555	Adj YW: 1104									
EPDs	CED	BW	WW	YW	MA	SC	DOC	CW	REA	YG	Marb
8	2.2	55	97	20	0.5			32	0.48	-.11	-.07

Double polled son of Red Pepper with high WW and YW EPD's. His dam goes back to Cassie.

**Lot 33****L7 0050X**PUREBRED, BULL                      RED/DOUBLE POLLED  
3/12/2010                      LSBL 0050X                      NPM1960756

WULFS NASA 1212N

WULFS RANSOM 3059R

WULFS NOBILITY 3059N

DVFC WARDEN 233K

MISS L7 822U

MISS L7 802H

UREA: 16.48

UFAT: 0.26

UIMF: 2.46

BW: 89 A	ADJ WW: 665	Adj YW: 1158									
EPDs	CED	BW	WW	YW	MA	SC	DOC	CW	REA	YG	Marb
11	0.0	45	83	20	0.1	24	27	0.69	-.12	-.06	

This Ransom son posted a 665 WW, scanned a 16.48 and has a .69 REA EPD. He is also double polled and goes back to good Revamp cow.



## L7 0052X

PUREBRED, BULL      DOUBLE BLACK/DOUBLE POLLED  
3/8/2010      LSBL 0052X      NPM1960758

WULFS RAMBLER 8400X  
WULFS GUARDIAN 5074G      UREA: 16.00  
WULFS EXAMPLE 5074E      UFAT: 0.29  
CARROUSELS MVP      UIMF: 1.71  
MISS L7 836U  
MISS L7 021K

BW: 78 A	ADJ WW: 651	Adj YW: 1128									
EPDs	CED	BW	WW	YW	MA	SC	DOC	CW	REA	YG	Marb
13	-0.7	39	78	15	0.3	25	9	0.54	-0.14	-0.19	

A double polled, double black Guardian son, small at birth and posted a 651 WW. He also scanned a 16 REA. Goes back to the 607 cow family.



## L7 0053X

PUREBRED, BULL      DOUBLE BLACK/DOUBLE POLLED  
3/15/2010      LSBL 0053X      NPM1960759

WULFS RAMBLER 8400X  
WULFS GUARDIAN 5074G      UREA: 16.74  
WULFS EXAMPLE 5074E      UFAT: 0.19  
CARROUSELS MVP      UIMF: 1.91  
MISS L7 837U  
MISS L7 422P

BW: 85 A	ADJ WW: 564	Adj YW: 1092									
EPDs	CED	BW	WW	YW	MA	SC	DOC	CW	REA	YG	Marb
12	0.3	42	80	16	0.4		20	0.71	-0.18	-0.23	

Another double black, double polled Guardian that scanned a 16.74 REA and has a .71 REA EPD.

# ~ Angus Reference Sires ~



## Duff Standout 785

DCC 002 Outlook 472  
O C C Lady Blackcap 753L

DCC New Look 101  
DCC Merle 002  
O C C Hercules 941H  
O C C Lady Blackcap 822H

EPDs	CED	BW	WW	YW	SC	DOC	MA	CW	Marb	RE
2	4.4	50	82	-0.08	5	21	15	.11	.46	

A high seller in the 2008 Power Plus Sale and purchased by ABS. This bull is deep sided and heavy muscled. He out performed all his flush mates with a 82 pound birth weight, 750 WW, 1488 YW, scanned an 18.3 REA, and marbled a 5.06.



## D C C Rito Prime 115

Rito 616 of 4B20 6807  
D C C Rita 482 of D806 185

D H D Traveler 6807  
Rita 4B20 of 0FB1 Bando  
N Bar Prime Time D806  
D C C Ideal 185 of 019 7220

EPDs	CED	BW	WW	YW	SC	DOC	MA	CW	Marb	RE
0	2.5	54	98	-0.37	20	19	28	.40	.49	

Another popular ABS sire with 616 in the pedigree.



## O C C Legend 616L

O C C Emblazon 854E  
O C C Blackbird 632J

D H D Traveler 6807  
Dixie Erica of C H 1019  
O C C Gladiator 612G  
O C C Blackbird 824G

EPDs	CED	BW	WW	YW	SC	DOC	MA	CW	Marb	RE
14	-0.7	41	60	.08	8	6	1	.19	.35	

A popular Ohlde bull that we used for calving ease and to moderate frame. He also adds depth of body and has excellent maternal traits. The females are making excellent cows.



## Northern Improvement 4480

TC Stockman 365  
Blackcap of R R 5367

TC Stockman  
TC Pride 0014  
R R Vantage 3352  
Blackcap of R R 0238

EPDs	CED	BW	WW	YW	SC	DOC	MA	CW	Marb	RE
10	-0.6	37	68	48	1	26	24	.28	.16	

Another calving ease sire used on heifers. Calves have tremendous length and performance.

*"A carefully constructed British X Continental can come a lot closer to hitting most of the targets for reproduction, production and end-product than any straightbred I'm aware of."*

*Dr. Jim Gosey, University of Nebraska Beef Specialist*

# ~ Yearling Lim-Flex ~

As the interest for different percentages of Limousin cattle evolves, we are developing the Lim-Flex cattle to meet this need. If you are trying to moderate a herd of larger framed continental cows, or want to maintain a certain blend of Limousin and English genetics, there are bulls in this group to meet your needs. Talk with us so we can help you attain your goals.

**cat**  
**36**

## L7 0002X

LIM-FLEX, BULL      DOUBLE BLACK/POLLED  
4/13/2010      LSBL 0002X      LFM1960704

O C C EMBLAZON 854E  
O C C LEGEND 616L      UREA: 13.32  
O C C BLACKBIRD 632J      UFAT: 0.24  
DSLW TAR MAC 60D  
MISS L7 829H      UIMF: 3.48  
MISS L7 628F

BW: 75 A	ADJ WW: 717	Adj YW: 1256										
EPDs	CED	BW	WW	YW	MA	SC	DOC	CW	REA	YG	Marb	
9	-1.8	35	65	20	0.1			21	-2.1	0.37	0.24	

A double black Legend son that goes back to a good Tar Mac cow. Small at birth, 717 WW and 1256 YW. Scanned a 3.48 IMF.

**cat**  
**39**

## L7 0016X

LIM-FLEX, BULL      DOUBLE BLACK/DOUBLE POLLED  
4/16/2010      LSBL 0016X      LFM1960719

RITO 616 OF 4B20 6807  
D C C RITO PRIME 115      UREA: 13.98  
DCC RITA 482 OF D806 185      UFAT: 0.27  
COLE FIRST DOWN 46D  
MISS L7 176L      UIMF: 3.67  
MISS L7 913X

BW: 75 A	ADJ WW: 749	Adj YW: 1339										
EPDs	CED	BW	WW	YW	MA	SC	DOC	CW	REA	YG	Marb	
12	-0.1	48	92	24				29	-4.3	0.55	0.33	

A high performing Prime son that's double black and double polled. He weaned at 749 pounds, had a 1339 YW, and scanned a 3.67 IMF. Goes back to old 913X Virginian cow.

**cat**  
**37**

## L7 0012X

LIM-FLEX, BULL      BLACK/DOUBLE POLLED  
4/18/2010      LSBL 0012X      LFM1960714

DCC 002 OUTLOOK 472  
DUFF STANDOUT 785      UREA: 15.72  
O C C LADY BLACKCAP 753L      UFAT: 0.29  
COLE FIRST HAND 143F  
MISS L7 118L      UIMF: 2.43  
MISS L7 806W

BW: 80 A	ADJ WW: 757	Adj YW: 1386										
EPDs	CED	BW	WW	YW	MA	SC	DOC	CW	REA	YG	Marb	
10	1.2	48	89	30								

Here's a high performing Standout son that posted an 757 WW and 1386 YW. He scanned a 15.72 REA. He's double polled and goes back to a good Virginian cow.



Duff Standout — Sire of Lots 37, 40, 41, 42, 43, 44, & 48

**cat**  
**38**

## L7 0013X

LIM-FLEX, BULL      DOUBLE BLACK/DOUBLE POLLED  
4/16/2010      LSBL 0013X      LFM1960715

O C C EMBLAZON 854E  
O C C LEGEND 616L      UREA: 15.08  
O C C BLACKBIRD 632J      UFAT: 0.35  
COLE FIRST HAND 143F  
MISS L7 122L      UIMF: 2.42  
MISS L7 912J

BW: 71 A	ADJ WW: 668	Adj YW: 1195										
EPDs	CED	BW	WW	YW	MA	SC	DOC	CW	REA	YG	Marb	
13	-2.3	38	69	20	0.2	5		26	-1.8	0.38	0.27	

A double black, double polled Legend son that was small at birth and weaned at 668 pounds. He scanned a 15.08 REA.

**cat**  
**40**

## L7 0017X

LIM-FLEX, BULL      BLACK/DOUBLE POLLED  
3/11/2010      LSBL 0017X      LFM1960720

DCC 002 OUTLOOK 472  
DUFF STANDOUT 785      UREA: 14.16  
O C C LADY BLACKCAP 753L      UFAT: 0.25  
TRAI DESERT STORM  
MISS L7 201M      UIMF: 2.96  
MISS L7 345C

BW: 93 A	ADJ WW: 720	Adj YW: 1253										
EPDs	CED	BW	WW	YW	MA	SC	DOC	CW	REA	YG	Marb	
5	2.5	47	82	23								

Another high performance son of Standout that is double polled.



**Rito Prime — Sire of Lots 39, 45,46 & 47**

**Lot 43**

**L7 0030X**

LIM-FLEX, BULL BLACK/DOUBLE POLLED  
4/2/2010 LSBL 0030X LFM1960738

DCC 002 OUTLOOK 472  
DUFF STANDOUT 785 UREA: 15.00  
O C C LADY BLACKCAP 753L UFAT: 0.39  
L 7'N SEVEN  
MISS L7 531R UIMF: 2.61  
MISS L7 516E

BW: 88 A	ADJ WW: 788	Adj YW: 1326									
EPDs	CED	BW	WW	YW	MA	SC	DOC	CW	REA	YG	Marb
	5	1.2	47	86	21						

Here's a soggy son of Standout that's double polled. Lots of performance here along with a 15 REA.

**Lot 45**

**L7 0038X**

LIM-FLEX, BULL DOUBLE BLACK/DOUBLE POLLED  
4/18/2010 LSBL 0038X LFM1960744

RITO 616 OF 4B20 6807  
D C C RITO PRIME 115 UREA: 14.42  
DCC RITA 482 OF D806 185 UFAT: 0.26  
L7 RED PEPPER 3001N  
MISS L7 648S UIMF: 2.96  
MISS L7 641F

BW: 80 A	ADJ WW: 681	Adj YW: 1225									
EPDs	CED	BW	WW	YW	MA	SC	DOC	CW	REA	YG	Marb
	9	-0.5	49	93	21			29	-0.25	0.44	0.31

Big weaning and yearling here. This bull is also double black and double polled.

**Lot 46**

**L7 0039X**

LIM-FLEX, BULL BLACK/DOUBLE POLLED  
4/13/2010 LSBL 0039X LFM1960745

RITO 616 OF 4B20 6807  
D C C RITO PRIME 115 UREA: 14.52  
DCC RITA 482 OF D806 185 UFAT: 0.24  
L7 RED PEPPER 3001N  
MISS L7 652S UIMF: 2.93  
MISS L7 125L

BW: 77 A	ADJ WW: 675	Adj YW: 1307									
EPDs	CED	BW	WW	YW	MA	SC	DOC	CW	REA	YG	Marb
	10	-0.4	53	100	23			35	-0.27	0.47	0.30

A high performing Prime son that's thick and deep. High growth EPD's as well as individual performance. He's double polled and goes back to the 913X Virginian cow.

*"There have been cutability issues and overly fat cattle that the higher percentage Angus cattle bring to the industry. Our buyers say the ideal Angus percentage is 50 to 75%.*

*Hybrid vigor is still very important at the cow/calf level and you can't get that by crossing Angus on Angus for multiple generations. But structured crossbreeding has been too hard to implement, especially for small sproducers. So the hybrid bull is convenient and brings the muscle that the continental breeds offer to the table."*

*Tom Brink, Five Rivers Ranch Cattle Feeders*

**Lot 41**

**L7 0018X**

LIM-FLEX, BULL DOUBLE BLACK/POLLED  
4/25/2010 LSBL 0018X LFM1960722

DCC 002 OUTLOOK 472  
DUFF STANDOUT 785 UREA: 13.30  
O C C LADY BLACKCAP 753L UFAT: 0.14  
CABIN CREEK BLACKMAIL 69F  
MISS L7 225M UIMF: 3.13  
MISS L7 132A

BW: 90 A	ADJ WW: 678	Adj YW: 1194									
EPDs	CED	BW	WW	YW	MA	SC	DOC	CW	REA	YG	Marb
	5	2.7	51	88	24						

This Standout son weaned at 678. He's double black and goes back to Cassie.

**Lot 42**

**L7 0020X**

LIM-FLEX, BULL DOUBLE BLACK/DOUBLE POLLED  
4/22/2010 LSBL 0020X LFM1960727

DCC 002 OUTLOOK 472  
DUFF STANDOUT 785 UREA: 14.80  
O C C LADY BLACKCAP 753L UFAT: 0.40  
CABIN CREEK BLACKMAIL 69F  
MISS L7 234M UIMF: 2.09  
MISS L7 941J

BW: 82 A	ADJ WW: 691	Adj YW: 1208									
EPDs	CED	BW	WW	YW	MA	SC	DOC	CW	REA	YG	Marb
	6	1.6	47	87	21						

A double polled, double black Standout going back to Cassie. He performed well at weaning and yearling time. This bull is moderate, deep sided and thick.

**Lot 44**

**L7 0032X**

LIM-FLEX, BULL BLACK/DOUBLE POLLED  
4/8/2010 LSBL 0032X LFM1960740

DCC 002 OUTLOOK 472  
DUFF STANDOUT 785 UREA: 14.72  
O C C LADY BLACKCAP 753L UFAT: 0.35  
L7 MERCEDES  
MISS L7 556R UIMF: 2.19  
MISS L7 029K

BW: 93 A	ADJ WW: 772	Adj YW: 1338									
EPDs	CED	BW	WW	YW	MA	SC	DOC	CW	REA	YG	Marb
	6	2.1	44	81	21						

A big, thick, rugged son of Standout that's double polled. Had a 772 WW and 1338 YW.

**Cat 47****L7 0043X**LIM-FLEX, BULL BLACK/DOUBLE POLLED  
4/2/2010 LSBL 0043X LFM1960749RITO 616 OF 4B20 6807  
D C C RITO PRIME 115 UREA: 14.30  
DCC RITA 482 OF D806 185 UFAT: 0.37  
L7 PEPPER POD 2015M UIMF: 2.62  
MISS L7 711T  
MISS L7 125L

BW:	85 A	ADJ WW:	725	Adj YW:	1315						
EPDs	CED	BW	WW	YW	MA	SC	DOC	CW	REA	YG	Marb
	9	0.5	50	96	21			29	-0.39	0.51	0.30

Here's a bull that is double polled and big on performance. He too goes back to the old 913X cow.

**Cat 48****L7 0047X**LIM-FLEX, BULL DOUBLE BLACK/DOUBLE POLLED  
3/27/2010 LSBL 0047X LFM1960753DCC 002 OUTLOOK 472  
DUFF STANDOUT 785 UREA: 15.28  
O C C LADY BLACKCAP 753L UFAT: 0.24  
WULFS GUARDIAN 5074G UIMF: 3.68  
MISS L7 731T  
MISS L7 542R

BW:	90 A	ADJ WW:	788	Adj YW:	1395						
EPDs	CED	BW	WW	YW	MA	SC	DOC	CW	REA	YG	Marb
	4	1.6	46	87	21						

A double black, double polled son of Standout that goes back to an excellent Thunder cow. He's thick, deep and offers a lot of performance. Scanned a 15.28 REA and marbled a 3.68.

**Cat 49****L7 0048X**LIM-FLEX 75%, BULL RED/DOUBLE POLLED  
4/12/2010 LSBL 0048X LFM1960754WULFS GUARDIAN 5074G  
L7 RED PEPPER 3001N UREA: 13.90  
L7 CHILI PEPPER 080K UFAT: 0.25  
O C C ANCHOR 771A UIMF: 3.11  
MISS L7 761T  
MISS L7 447P

BW:	80 A	ADJ WW:	618	Adj YW:	1118						
EPDs	CED	BW	WW	YW	MA	SC	DOC	CW	REA	YG	Marb
	6	0.3	39	76	11	0.1		25	0.17	0.09	0.09

A moderate, double polled, three-quarter blood out of a good little Anchor cow. He is deep sided and thick.

**Cat 50****L7 0051X**LIM-FLEX 75%, BULL BLACK/DOUBLE POLLED  
2/25/2010 LSBL 0051X LFM1960757TC STOCKMAN 365  
NORTHERN IMPROVEMENT 4480 UREA: 14.68  
BLACKCAP OF RR 5367 UFAT: 0.24  
WULFS GUARDIAN 5074G UIMF: 2.27  
MISS L7 829U  
MISS L7 616S

BW:	70 A	ADJ WW:	699	Adj YW:	1312						
EPDs	CED	BW	WW	YW	MA	SC	DOC	CW	REA	YG	Marb
	15	-4.7	37	75	28	-0.1	18	24	-0.37	0.54	0.22

A double polled bull that was small at birth and did nothing but grow after that! He posted a 699 WW and 1312 YW. He's long and thick. Goes back to the old 607 Thunder cow.

**Cat 51****L7 0054X**LIM-FLEX, BULL BLACK/DOUBLE POLLED  
2/23/2010 LSBL 0054X LFM1960760O C C EMBLAZON 854E  
O C C LEGEND 616L UREA: 14.74  
O C C BLACKBIRD 632J UFAT: 0.45  
CARROUSELS MVP UIMF: 2.57  
MISS L7 839U  
MISS L7 516R

BW:	88 A	ADJ WW:	852	Adj YW:	1432						
EPDs	CED	BW	WW	YW	MA	SC	DOC	CW	REA	YG	Marb
	9	-0.9	49	84	15	0.3	6	33	-1.11	0.36	0.25

A double polled Legend son that is real moderate, soggy, and thick made. He could sure tip the scale at weaning and yearling time with his 852 WW and 1432 YW.

**Cat 52****L7 0056X**LIM-FLEX 75%, BULL DOUBLE BLACK/DOUBLE POLLED  
3/16/2010 LSBL 0051X UNRECORDEDWULFS RAMBLER 8400X  
WULFS GUARDIAN 5074G UREA: 14.80  
WULFS EXAMPLE 5074E UFAT: 0.15  
MYTTY IN FOCUS UIMF: 1.94  
MISS L7 871U  
MISS L7 659S

BW:	84 A	ADJ WW:	665	Adj YW:	1227						
EPDs	CED	BW	WW	YW	MA	SC	DOC	CW	REA	YG	Marb

A double black and double polled three-quarter blood. This Guardian son is moderate, thick, and has plenty of rib. Goes back to the old Sally cow and the Virginian.

**Cat 53****L7 0057X**LIM-FLEX 75%, BULL DOUBLE BLACK/DOUBLE POLLED  
4/1/2010 LSBL 0057X LFM1960761WULFS RAMBLER 8400X  
WULFS GUARDIAN 5074G UREA: 14.48  
WULFS EXAMPLE 5074E UFAT: 0.33  
O C C LEGEND 616L UIMF: 2.82  
MISS L7 874U  
MISS L7 801H

BW:	80 A	ADJ WW:	671	Adj YW:	1200						
EPDs	CED	BW	WW	YW	MA	SC	DOC	CW	REA	YG	Marb
	10	-2.0	36	70	19	-0.2	16	15	0.32	0.08	-0.2

Another three-quarter blood that's double polled and double black. This bull is muscular and long. He posted a 671 WW. Out of a real nice Legend cow that goes back to the old 530T cow.

*"Those quarter and halfblood Limousin cows are some of the best out there."*

*Jim Odle, Superior Livestock Auction*



# • Terms and Conditions •

**Terms:** Cash - settlement immediately after the sale unless prior arrangements have been made.

**Health:** September - Cattle Master 4 (IBR-BVD-PI3-BRSV); 7 way Clostridium; Haemophilus Somnus. Heifers are all Brucellosis vaccinated. October - Three weeks later at weaning; Cattle Master 4, Haemophilus Somnus, Ivomec. April - Bulls are scrotal measured, semen tested, Brucellosis tested. Breeding age females have had Preg 9, Anthrax in spring.

(1) On all animals sold, health tests will be announced at the sale or printed in the sale catalog. It is understood that health papers reflect the condition of the animal at the time of the sale but carry no further guarantee as to the future health of the animal. (2) Buyers having special health requests or who wish to take cattle into states with specific or rigid health regulations should inquire specifically about the health tests required for entry into their state. (3) All females sold are considered to be calf-hood vaccinated for Brucellosis unless they are otherwise stated in the catalog or announced from the block. It is suggested that verification of vaccination be written on the health certificate.

**Delivery:** Free delivery on any purchase of \$20,000 or more to any point in the continental US. Free delivery to central locations in South Dakota and surrounding states.

**Guarantee:** All bulls are semen tested and are guaranteed to be breeders and settle cows. Scrotal measurements will be available sale day. All females one year of age are guaranteed breeders.

**Purchaser's Risk:** Each animal becomes the risk of the purchaser as soon as sold. It shall be the obligation of the seller to see that the animals are fed and cared for free of charge to the purchaser for at least 48 hours following the sale. It shall be the obligation of the purchaser to see that trucking of the animal and care of the animal past the first 48 hours following the sale are taken care of.

**Multiple Herd Use:** The North American Limousin Association new rules state: any bull used A.I. in more than one herd, must have the dam blood typed. If you are planning on using any bulls this way, please write on invoice sale day so we have the blood work on those cows on file. Lots 6, 7, 8, 9, and 10 are not eligible for AI use. Dams were sold before blood typed.

**Liability:** Each animal will be at the buyer's risk as soon as sold, but will be cared for by the seller for a reasonable period of time. Every precaution will be taken for the welfare of the cattle sold. The L7 Bar

Ranch will not be responsible for accidents, but every effort will be made to provide for the safety and comfort of those attending the sale.

**Identification of Animals:** (1) Each animal sold will have a readable tattoo corresponding to its registration paper. (2) Seller agrees to check all tattoos for accuracy prior to the sale. The buyer has the responsibility for rechecking the tattoos after taking possession and reporting any discrepancies to the seller immediately. (3) All animals to be sold will be identified by their official registration number, their tattoo and their registered name. If nicknames are used, they should be in addition to the other information. (4) The North American Limousin Foundation (NALF) board recommends that when any animal is sold, there is complete disclosure of any retained genetics in the form of pregnant recipients, frozen embryos or frozen semen.

**Registration Certificates:** (1) The seller of the animal will submit the original registration certificate with transfer information or an application for registration with transfer information on it so that a certificate can be produced by the Foundation and transferred to the new buyer. The seller must sign the back of the certificate on the application to authorize the transfer. (2) It is the responsibility of the seller to provide NALF with the buyer's complete name, address and membership number (if available) so that they can complete the transfer. It is important that the membership number be given if the buyer is already a member of NALF. (3) It is the seller's responsibility to provide the certificate or application, and transfer information to NALF within 60 days of sale, and pay transfer and registration fees.

**Announcements:** (1) Any change from the information that is printed in the catalog will be announced from the auction block. (2) All announcements made from the auction block take precedence over the printed catalog. (3) Catalogued lots not selling will be announced prior to the sale.

**Mail Bids:** Mailed or telephoned bids will be handled in a most confidential manner. If you are unable to be present to place your bids, please feel free to contact the Peterson's.

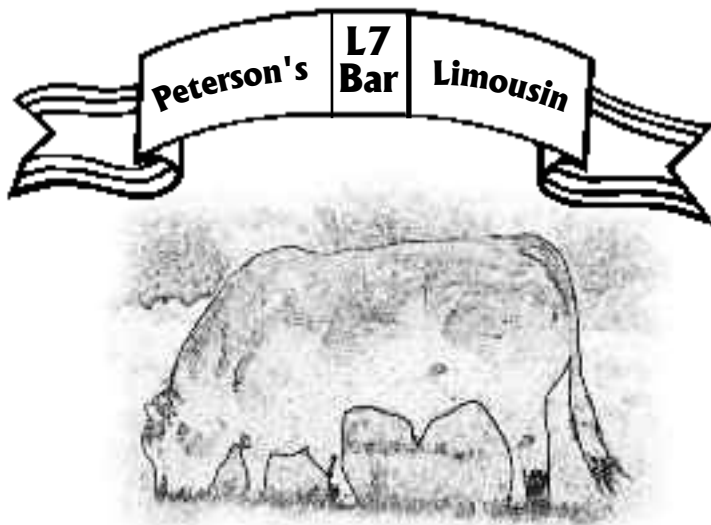
# **Peterson's L7 Bar Limousin**

**Rod and Wendy Peterson & Family**

**34715 255th St.**

**Pukwana, SD 57370**

**605/894-4470**



**Annual Production Sale**  
**1:00 p.m., Tuesday, April 12, 2011**  
**at the ranch, Pukwana, SD**

**Sale Day Phone: 605/894-4470**